

# HOUSE AND LAND PACKAGE

IN HERITAGE PARC, RUTHERFORD

(Land Size: 533m<sup>2</sup>)

# \$502,374

## SANDPIPER 22

Lindeman Facade

202.62m<sup>2</sup>

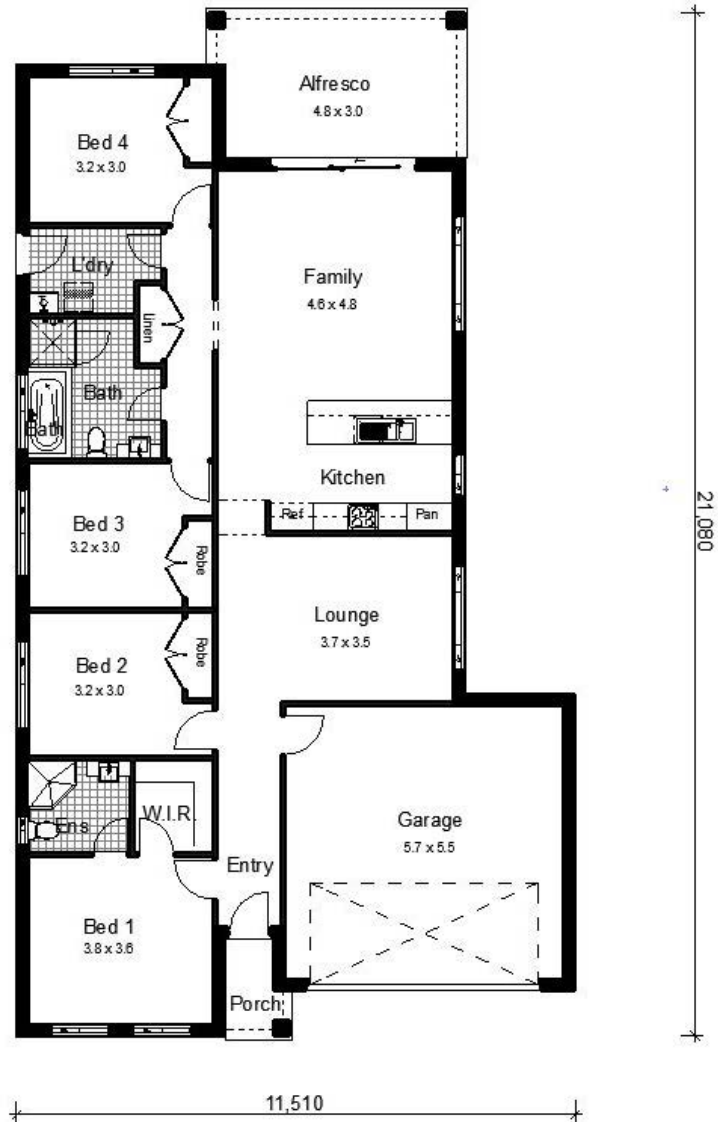


# HOUSE AND LAND PACKAGE

## LOT 39 GRAND PARADE, RUTHERFORD

### PACKAGE INCLUDES:

- Provisional Site Costs & BASIX
- Provisional Design & Planning Costs
- Steel Frame & Trusses
- Termimesh Pest Control
- Colorbond Roof
- Flyscreens to all Windows
- Flydoors to All Sliding Doors
- Inline Water Filter
- Alfresco with Concrete Slab
- Overhead Cupboards
- Automatic Garage Door
- Personal Colour Consultation
- Actron Ducted Air Conditioning
- 900mm Westinghouse Appliances-  
*Cooktop, Oven, Rangehood*
- Dishlex Dishwasher
- Caesarstone Benchtops with Waterfall  
Ends to Island (20mm)
- Floor Coverings (Carpet & Tiles)
- Concrete Driveway
- **Plus many more quality inclusions!**



\*Heron Facade floorplan shown- slight differences depending on facade

### CONTACT:

**Jackie Barton** - Sales Consultant (Harvest Boulevard, Chisholm)

Phone: (02) 4046 9832 Mobile: 0419 417 755

Email: [jackie@bartletthomes.com.au](mailto:jackie@bartletthomes.com.au)

Web: [www.bartletthomes.com.au](http://www.bartletthomes.com.au)

