

HOUSE AND LAND PACKAGE

IN HERITAGE PARC, RUTHERFORD

(Land Size: 575m²)

\$512,469

PROTEA 29

Hamilton Facade

269.90m²

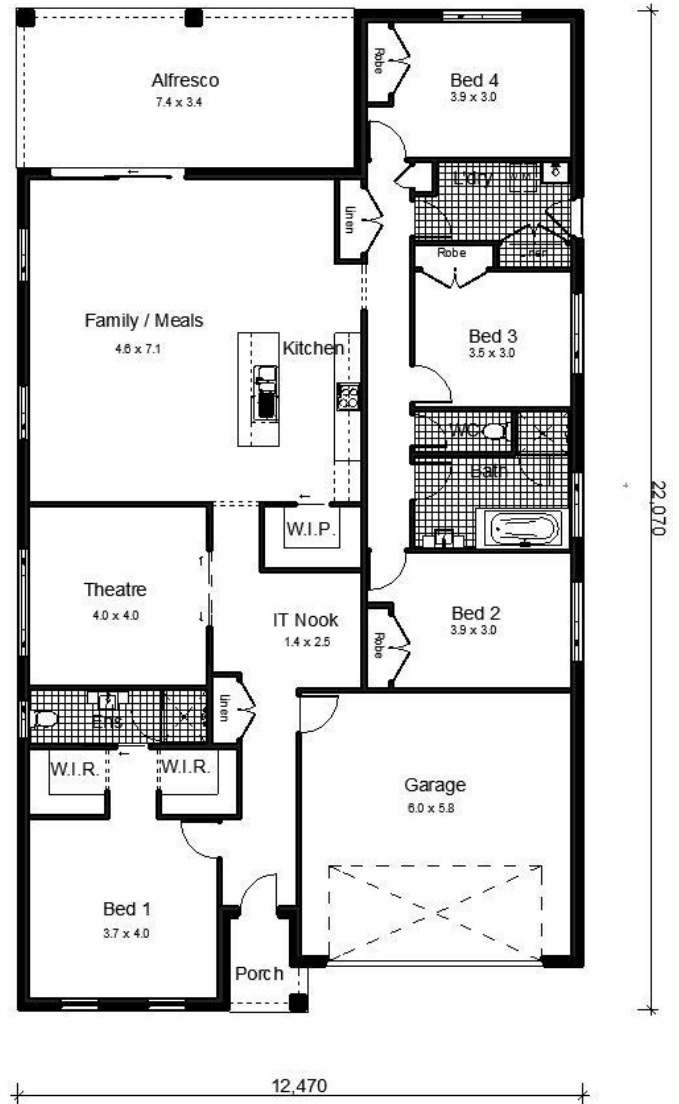


HOUSE AND LAND PACKAGE

LOT 56 GRAND PARADE, RUTHERFORD

PACKAGE INCLUDES:

- Provisional Site Costs & BASIX
- Provisional Design & Planning Costs
- Steel Frame & Trusses
- Termimesh Pest Control
- Colorbond Roof
- Flyscreens to all Windows
- Flydoors to All Sliding Doors
- Inline Water Filter
- Alfresco with Concrete Slab
- Overhead Cupboards
- Automatic Garage Door
- Personal Colour Consultation
- Actron Ducted Air Conditioning
- 900mm Westinghouse Appliances-
Cooktop, Oven, Rangehood
- Dishlex Dishwasher
- Caesarstone Benchtops with Waterfall
Ends to Island (20mm)
- Floor Coverings (Carpet & Tiles)
- Concrete Driveway
- **Plus many more quality inclusions!**



*Heron Facade floorplan shown- slight differences depending on facade

CONTACT:

Jackie Barton - Sales Consultant (Harvest Boulevard, Chisholm)

Phone: (02) 4046 9832 Mobile: 0419 417 755

Email: jackie@bartletthomes.com.au

Web: www.bartletthomes.com.au



This price is based on standard site costs and BASIX ONLY. Price based on standard inclusions. Images may include upgrade items and may depict fixtures, features and finishes not supplied by Bartlett Homes such as landscaping and fencing. Package correct at time of printing and subject to change without notice. See your Bartlett sales consultant for full details of inclusions. Package printed date: 12/06/2017.