

HOUSE AND LAND PACKAGE

IN HERITAGE PARC, RUTHERFORD

(Land Size: 753m²)

\$541,953

PROTEA 24

Heron Facade

223.73m²



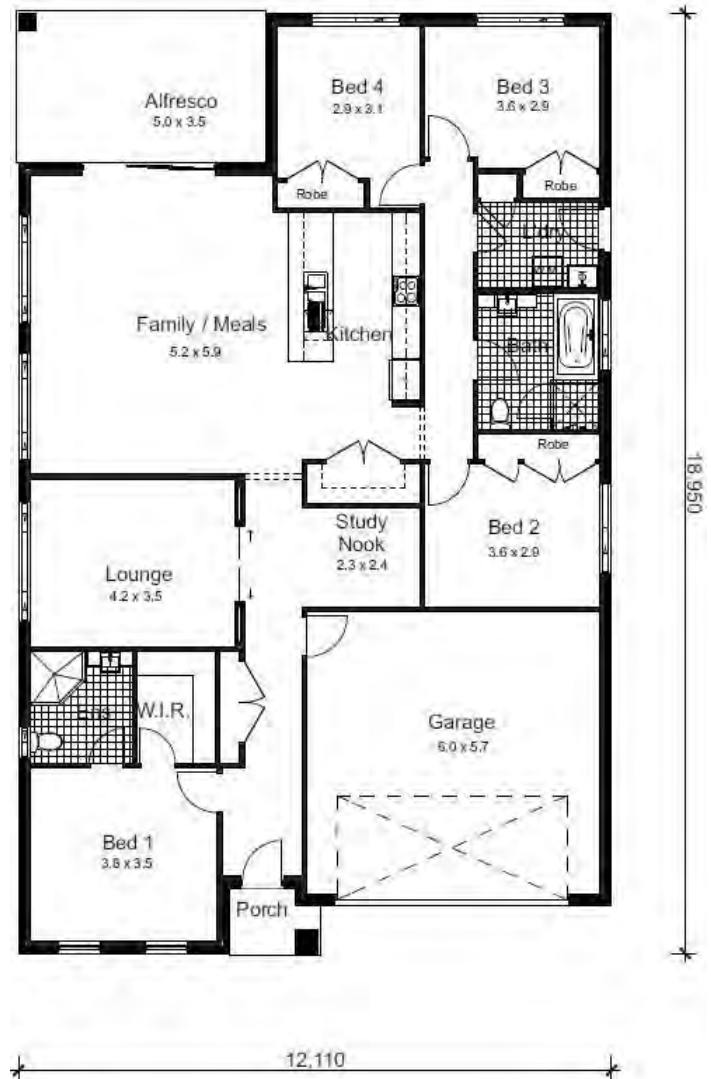
Price based on land cost of \$248,000 at time of printing.

HOUSE AND LAND PACKAGE

LOT 122, BOUNDARY STREET, RUTHERFORD

PACKAGE INCLUDES:

- Provisional Site Costs, BASIX, BAL Allowance and Council Costs
- Truecore Steel Frame & Trusses
- Termimesh Pest Control
- Colorbond Roof with Anticon Blanket
- Flyscreens to all Windows
- Flydoors to All Sliding Doors
- Actron Ducted Air Conditioning
- 900mm Westinghouse Appliances-
Cooktop, Oven, Rangehood, Microwave
- Stainless Steel Dishlex Dishwasher
- 20mm Caesarstone Benchtops to Kitchen with Waterfall Ends to Island
- Floor Coverings (Carpet & Tiles)
- Concrete Driveway
- Hume 1200mm Stained Entrance Door
- Alfresco with Concrete Slab
- Overhead Cupboards with Sheen Finish
- Automatic Sectional Panelift Colorbond Garage Door with 2 Remotes
- Personal Colour Consultation
- PGH Certified Brick Cleaning
- **Plus many more quality inclusions!**



*6m x 6m garage included in price- not shown on plan

Contact:

Jackie Barton - Sales Consultant (Harvest Boulevard, Chisholm)

Phone: (02) 4046 9832 Mobile: 0419 417 755

Email: jackie@bartletthomes.com.au

Web: www.bartletthomes.com.au

