



HOUSE AND LAND PACKAGE



LOT 110

Fairway Street, Heritage Parc Estate
Maitland

Avoca 181 | Cosmo



4 beds



2 baths



2 parks



19.6 squares



12.14m wide

LOT SIZE: 490m²

\$444,800

including land \$169,000

This house and land package includes:

- Designer Essentials inclusions
- BASIX requirements including water tank
- Standard site costs
- Termite resistant frames and trusses
- Sarking under roof tiles
- Large double garage with remote control door
- Flyscreens to all windows and sliding doors

Additional Bonuses:

- Ilve dishwasher
- Stunning Caesarstone® kitchen benchtops
- Ceramic tiling to living areas
- Quality carpet to non-tiled areas
- Supply and installation of light fittings
- Coloured concrete driveway and footpath
- Alfresco entertainment area including slab
- Daikin ducted air conditioning





Avoca 181 Cosmo

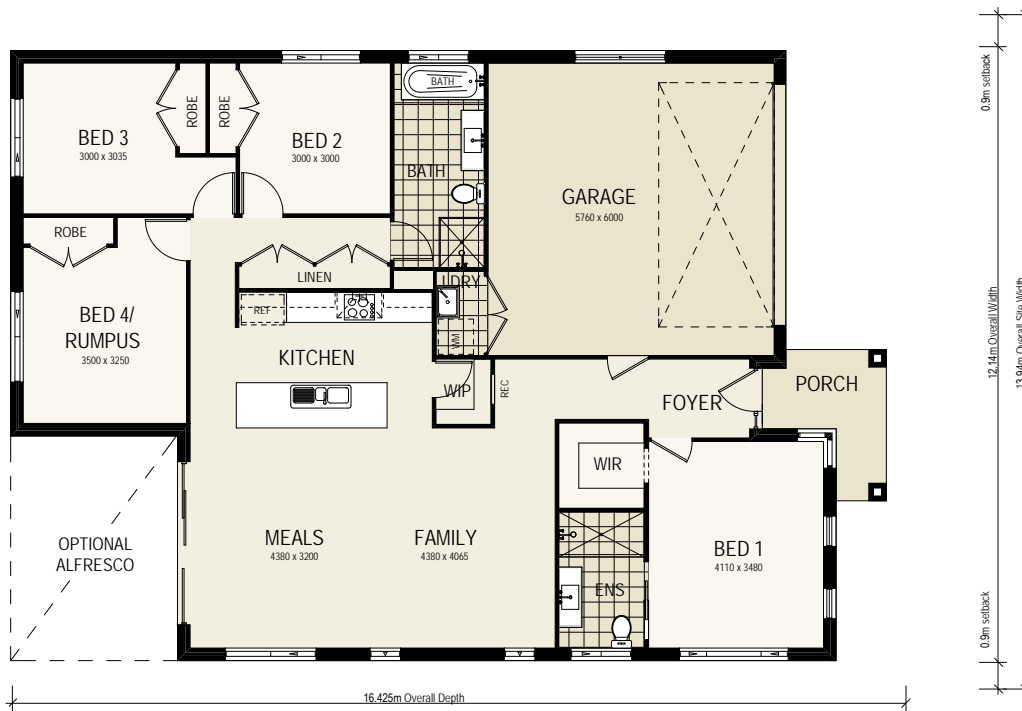
montgomeryhomes.com.au

LOT 320
KELLYVILLE AREA

4 beds 2 baths 2 parks 19.6 squares 12.14m wide

TOTAL FLOOR AREA
19.6 squares or 181.95m²

LOT SIZE
362m²



For more information, please contact:

Meagan Anderson
meagan@montgomeryhomes.com.au

CONDITIONS APPLY Please note that this is not a final tender and Montgomery Homes reserves the right to revise plans, pricing & all specifications without obligation or notice. Pricing is subject to Council & any other statutory or regulatory authority requirements (Eg. BASIX, Mines, Bushfire etc). Designs and plans are Copyright protected and remain the property of Montgomery Homes Pty Ltd at all times. Pictures shown are for illustrative purposes only. Price excludes any external works i.e. landscaping, driveway, retaining walls & excludes floor coverings to living areas & bedrooms etc, window furnishings & light fittings.



montgomeryhomes.com.au

