



# HOUSE AND LAND PACKAGE



**LOT 111**

Fairway Street, Heritage Parc Estate  
Maitland

Southport 217 | **Executive**



4 beds



2 baths



2 parks



23.3 squares



10.7m wide

**\$518,100**  
Including land \$184,000

## This house and land package includes:

- Designer Essentials inclusions
- BASIX requirements including water tank
- Standard site costs
- Termite resistant frames and trusses
- Sarking under roof tiles
- Large double garage with remote control door
- Flyscreens to all windows and sliding doors

## Additional Bonuses:

- Iive dishwasher
- Stunning Caesarstone® kitchen benchtops
- Ceramic tiling to living areas
- Quality carpet to non-tiled areas
- Supply and installation of light fittings
- Alfresco entertainment area including slab
- Daikin ducted air conditioning



**MORE DESIGNS**  
**AVAILABLE**



# Southport 217 Executive

montgomeryhomes.com.au



## LOT 111

Fairway Street,  
Heritage Parc Estate,  
Maitland



4 beds



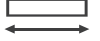
2 baths



2 parks



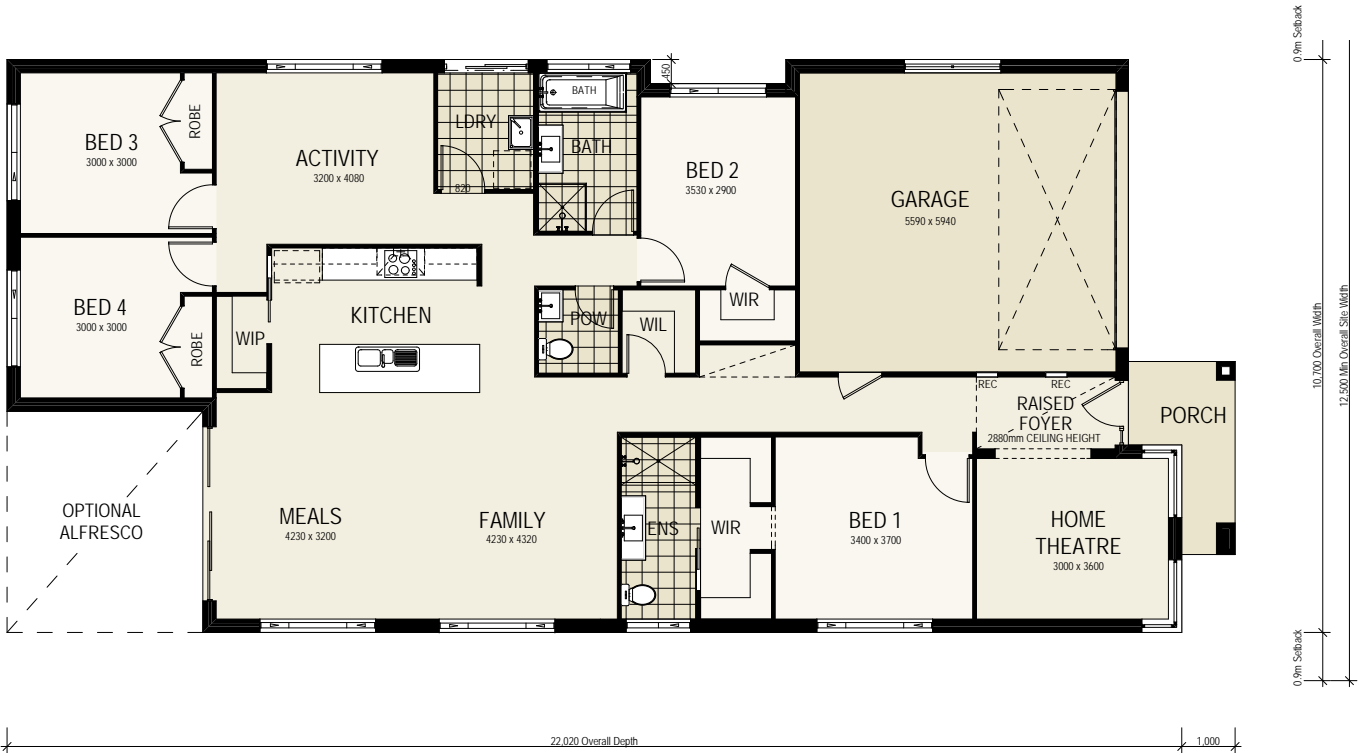
23.3 squares



10.7m wide

TOTAL FLOOR AREA  
23.3 squares or 216.74m<sup>2</sup>

LOT SIZE  
525m<sup>2</sup>



For more information, please contact:

Meagan Anderson  
0413 685 277

meagan@montgomeryhomes.com.au

**CONDITIONS APPLY** Please note that this is not a final tender and Montgomery Homes reserves the right to revise plans, pricing & all specifications without obligation or notice. Pricing is subject to Council & any other statutory or regulatory authority requirements (Eg. BASIX, Mines, Bushfire etc). Designs and plans are Copyright protected and remain the property of Montgomery Homes Pty Ltd at all times. Pictures shown are for illustrative purposes only. Price excludes any external works i.e. landscaping, driveway, retaining walls & excludes floor coverings to living areas & bedrooms etc, window furnishings & light fittings.



montgomeryhomes.com.au

