



Bartlett HOMES

HOUSE AND LAND PACKAGE

IN Heritage Parc, MAITLAND

(Land Size: 518m²)

\$498,653

PROTEA 24

Daydream Facade

223.91m²



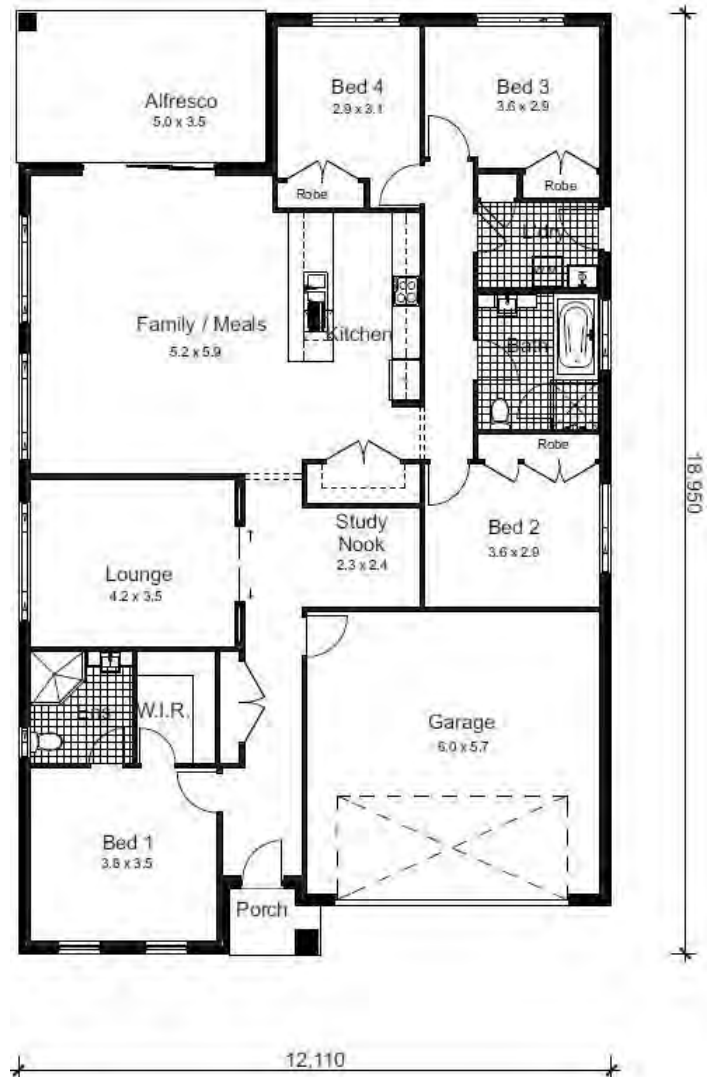
Price based on land cost of \$175,000 at time of printing.

HOUSE AND LAND PACKAGE

Lot 17 Pitch Street, Maitland

PACKAGE INCLUDES:

- Provisional Site Costs, BASIX and Council Costs
- Truecore Steel Frame & Trusses
- Termimesh Pest Control
- Colorbond Roof with Anticon Blanket
- Flyscreens to all Windows
- Flydoors to All Sliding Doors
- Actron Ducted Air Conditioning
- 900mm Westinghouse Appliances-
Cooktop, Oven, Rangehood, Microwave
- Stainless Steel Dishlex Dishwasher
- 20mm Caesarstone Benchtops to Kitchen with Waterfall Ends to Island
- Floor Coverings (Carpet & Vinyl)
- Concrete Driveway
- Hume 1200mm Stained Entrance Door
- Alfresco with Concrete Slab
- Overhead Cupboards with Sheen Finish
- Automatic Sectional Panelift Colorbond Garage Door with 2 Remotes
- Personal Colour Consultation
- PGH Certified Brick Cleaning
- **Plus many more quality inclusions!**



*Heron Facade floorplan shown- slight differences depending on facade 6m x 6m garage included in price- not shown on plan

Contact:

Jackie Barton - Sales Consultant (Harvest Boulevard, Chisholm)

Phone: (02) 4046 9832 Mobile: 0419 417 755

Email: jackie@bartletthomes.com.au

Web: www.bartletthomes.com.au

