

# House & Land Package

From **\$443,817**

Based on house \$268,517 and land \$175,000



Valid until 30 September 2019



## Quartz 21 - Designer

Lot 11 Pitch Street, Rutherford

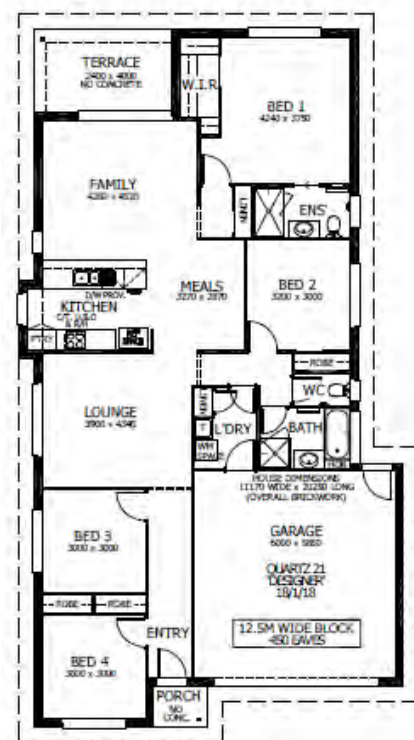
Floor Area: 194.63m<sup>2</sup> or 20.92sq Block Size: 518m<sup>2</sup>



### Package Inclusions:

- Prestige Façade
- Covered Terrace
- All Internal Floor Coverings
- Perry Homes "Prestige Inclusions Package"
- Fully Ducted Air Conditioning
- Upgraded Designer Kitchen with Stainless Steel Appliances
- Flyscreens to all windows and sliding doors
- Wall mounted clothesline
- Powder coated letter box and TV antenna
- Concrete Allowance Driveway, Porch and Terrace
- Site works & Basix allowance of \$30,000 *\*subject to Contour Survey*

*\*Allowance included for late registration date*



**Lisa Simmonds-Webb**

02 4021 1680

[lisa.simmondswebb@perryhomes.com.au](mailto:lisa.simmondswebb@perryhomes.com.au)

[www.hunterregionhouseandland.com.au](http://www.hunterregionhouseandland.com.au)

**Ben Hancock**

0435 956 546

[ben.hancock@perryhomes.com.au](mailto:ben.hancock@perryhomes.com.au)

[www.hunterregionhouseandland.com.au](http://www.hunterregionhouseandland.com.au)



Façade upgrades are available as optional extras



Image indicative only

#### Disclaimer

Due care has been taken with the siting, design and pricing of the proposed dwelling based upon current information and is correct at time of publication. This however, may change as a result of other influences such as; developer covenants, local, state or federal government requirements etc. Also, undetermined site conditions such as; tree removal, acoustics, bushfire, rock etc. may be excluded unless otherwise specified. Terms and conditions apply to campaigns and special offers. Plans and images are for illustrative purposes only and may not accurately depict the finished product. Some images may include products which are not supplied by Perry Homes and are used for display purposes only. Perry Homes (Aust) Pty Ltd. QBCC Act Lic. No.718748 NSW Lic No. 110970C