

# House & land package

From **\$446,292**

Based on house \$273,292 and land \$173,000

Valid until 30 September 2019



## Onyx 22 - Designer

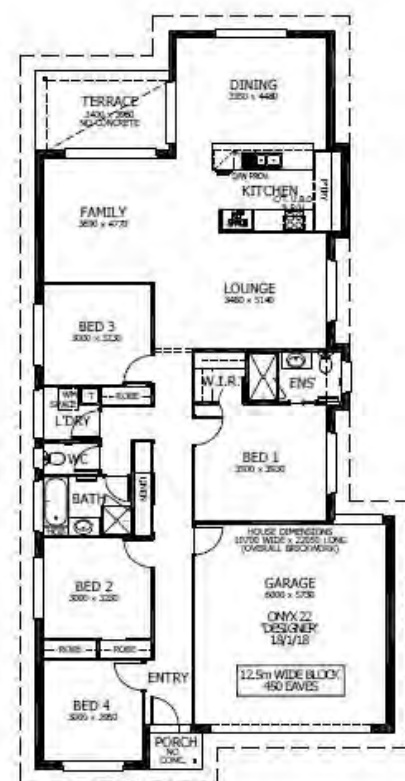
Lot 3 Grand Parade, Rutherford

Floor Area: 201.01m<sup>2</sup> or 21.61sq Block Size: 518m<sup>2</sup>

### Package Inclusions:

- Prestige Façade
- Covered Alfresco
- Fully Ducted Air Conditioning
- All Internal Floor Coverings
- Upgraded Designer Kitchen with Stainless Steel Appliances
- Flyscreens to windows and sliding doors
- Concrete Allowance to Driveway, Porch and Terrace
- Wall mounted clothesline
- Powder coated letter box , TV Antenna
- Perry Homes "Prestige Inclusions Package"
- Site works & Basix allowance of \$30,000 *\*Subject to Contour Survey*

*\*Allowance for late registration*



**Lisa Simmonds-Webb**

02 4021 1680

[lisa.simmondswebb@perryhomes.com.au](mailto:lisa.simmondswebb@perryhomes.com.au)

[www.hunterregionhouseandland.com.au](http://www.hunterregionhouseandland.com.au)

**Ben Hancock**

0435 956 546

[ben.hancock@perryhomes.com.au](mailto:ben.hancock@perryhomes.com.au)

[www.hunterregionhouseandland.com.au](http://www.hunterregionhouseandland.com.au)



Disclaimer

Façade upgrade available as an optional extra

Image indicative only

Due care has been taken with the siting, design and pricing of the proposed dwelling based upon current information and is correct at time of publication. This however, may change as a result of other influences such as; developer covenants, local, state or federal government requirements etc. Also, undetermined site conditions such as; tree removal, acoustics, bushfire, rock etc. may be excluded unless otherwise specified. Terms and conditions apply to campaigns and special offers. Plans and images are for illustrative purposes only and may not accurately depict the finished product. Some images may include products which are not supplied by Perry Homes and are used for display purposes only. Perry Homes (Aust) Pty Ltd. QBCC Act Lic. No.718748 NSW Lic No. 110970C