



Image may depict upgrades that are not included in the pricing.

Floor area: 199.41m<sup>2</sup> / 21.47sq | Block Size: 459m<sup>2</sup>

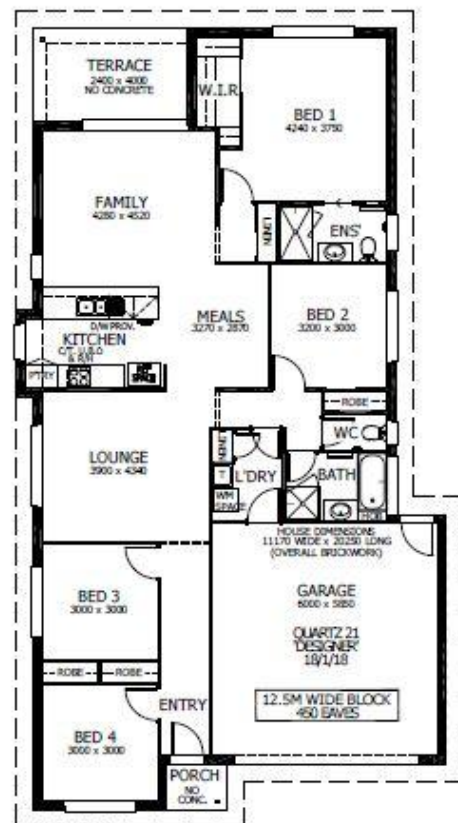
Address: Lot 37 Grand Parade, Rutherford



## Quartz 21 Package Inclusions



- \* Urban Façade
- \* Covered Alfresco
- \* Perry Homes 'Prestige Inclusions'
- \* Upgraded Designer Kitchen with stainless steel appliances
- \* Fully Ducted Air Conditioning
- \* All internal floor coverings
- \* Flyscreens to all windows and sliding doors
- \* Wall mounted clothesline
- \* TV antenna
- \* Powder coated letter box
- \* Concrete allowance to driveway, porch and terrace
- \* Site Works and BASIX allowance included  
(subject to Contour Survey)
- \* Allowance included for late registration date



**Lisa Simmonds-Webb**

0458 169 805

[lisa.simmondswebb@perryhomes.com.au](mailto:lisa.simmondswebb@perryhomes.com.au)

[www.hunterregionhouseandland.com.au](http://www.hunterregionhouseandland.com.au)

**Ben Hancock**

0435 956 546

[ben.hancock@perryhomes.com.au](mailto:ben.hancock@perryhomes.com.au)

[www.hunterregionhouseandland.com.au](http://www.hunterregionhouseandland.com.au)

