



HOUSTON FACADE

LOT 65 RANGER CLOSE, RUTHERFORD

# Prague 22

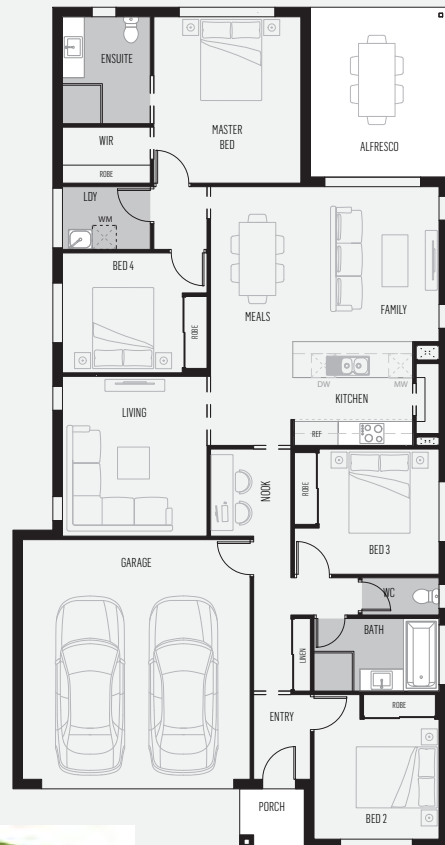
HOME PRICE: \$256,500  
LAND PRICE: \$237,500

From \$494,000\*

Land Size	667m <sup>2</sup>
Lot Width	17.4m
Overall home size	207.39m <sup>2</sup>
Home Length	21.08m
Home Width	10.91m

## INCLUSIONS

- Designer rendered front facade
- Colorbond roof (promotion included)
- LED down lights throughout (promotion included)
- 2590mm ceilings throughout (promotion included)
- Driveway, porch and path (promotion included)
- Stone benchtops to kitchen and vanities
- Floor coverings throughout
- Ducted air throughout
- Covered outdoor room
- Turf and garden landscaping to front yard
- Letter box and clothesline
- Lifetime structural guarantee



LUXURY, COMFORT AND STYLE  
WE'VE GOT IT COVERED!

- ✓ COLORBOND ROOF UPGRADE
- ✓ LED DOWNLIGHTS TO TOTAL HOME
- ✓ HIGHER CEILINGS THROUGHOUT
- ✓ DRIVEWAY, PORCH AND PATH

TAKE ALL 4  
FOR ONLY  
**\$10,000**



CANVAS  
Series

KARON HART 0428 894 590 KARON.HART@PRIVIUMHOMES.COM.AU | 1300 002 268 WWW.PRIVIUMHOMES.COM.AU