



## Manly 30

## HOUSE & LAND PACKAGE



Address **Lot No 156**  
**Canter Close - Heritage Parc**  
**Lot Size 589sqm**

Price **\$545,676**

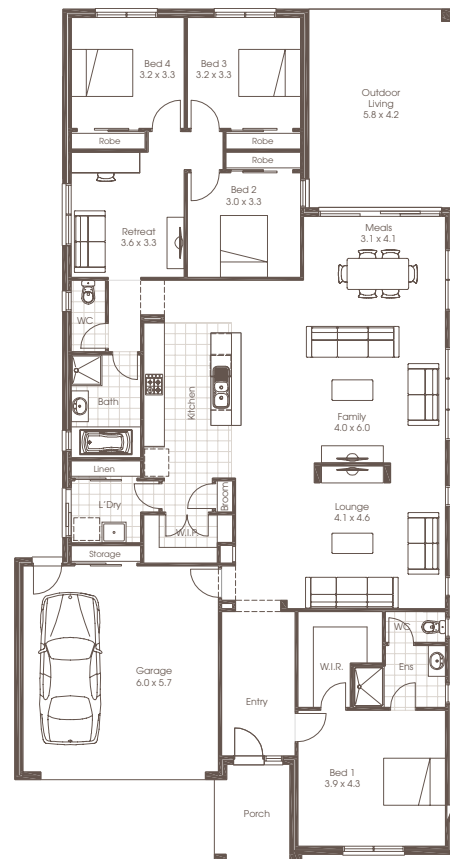
• Image shown depicts Kingston facade, House and Land package price is based on the Lifestyle facade.

- Lifestyle Inclusions
- Colorbond Roof
- 450mm Eaves
- 2400mm ceilings
- Floor coverings and tiles
- Haymes 3 coat paint system
- 600mm Westinghouse stainless steel appliances
- Ducted Air-Conditioning
- R3.5 batts to ceilings and R2.0 batts to external walls
- 50sqm external natural concrete pavement.

For Further Information

**Cavalier Homes**

Ben Heaft - 0477 745158



Each office is independently owned and operated. Room sizes shown are approximate only, please refer to final working drawings for actual sizes. Plans are protected by copyright. Prices, inclusions and plans are subject to variation without notice. Display/show home designs and inclusions vary throughout Australia and New Zealand and are provided as a guide only. Please refer to your building contract for the specific design and inclusion details of your new home. \*Conditions Apply. Contact us for all information regarding the inclusions. Site allowances subject to soil reports & Engineering report. This information sheet is a guide only.

Cavalier Homes Registered Builders in Albury-Wodonga CDB-U 48509 (VIC) 184744C (NSW), Bendigo CDB-U 50034, Greater Western Sydney 332118C, AGoulburn Valley CDB-U 51879 (VIC) 316535C (NSW), Goldfields CDB-U 58723, Melbourne West CDB-M 49760, North Coast 209455C, Wagga Wagga 196616C.