



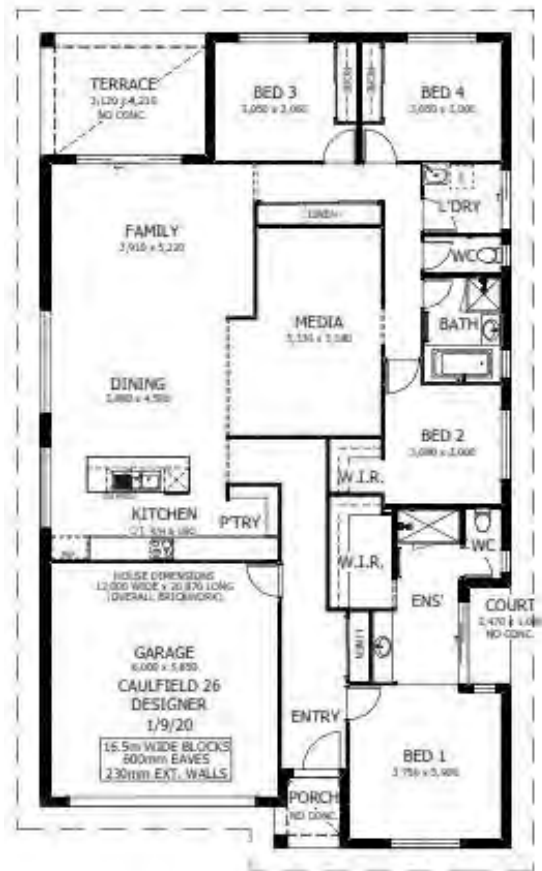
Image may depict upgrades that are not included in the pricing.

Floor area: 244m² / 26.26sq |
Frontage: 12m Depth: 20.87m



Caulfield 26 Package Inclusions

- * Executive facade
- * 22.5° Roof Pitch
- * Perry Homes 'Standard Inclusions'
- * Fully Ducted Air Conditioning
- * Enhance Collection
- * Envy Collection
- * Retreat Collection
- * Indulge Collection
- * Sustainability Collection
- * Inspired finishes
- * All internal floor coverings
- * Flyscreens to all windows and sliding doors
- * Wall mounted clothesline
- * TV antenna & Letterbox
- * Concrete allowance to driveway, porch & terrace
- * Allowance for BAL 12.5 requirements
- * Site Works and BASIX allowance including Council lodgement *(subject to Contour Survey)*



Ben Hancock
0435 956 546

ben.hancock@perryhomes.com.au

www.hunterregionhouseandland.com.au

Brooke Sinclair
02 4077 3833

brooke.sinclair@perryhomes.com.au

www.hunterregionhouseandland.com.au



"Disclaimer: Due care has been taken with the siting, design and pricing of the proposed dwelling based upon current information and is correct at time of publication. This however, may change as a result of other influences such as; developer covenants, local, state or federal government requirements etc. Also, undetermined site conditions such as; tree removal, acoustics, bushfire, rock etc. may be excluded unless otherwise specified. Terms and conditions apply to campaigns and special offers. Plans and images are for illustrative purposes only and may depict features such as landscaping, furniture, window furnishings and lighting that are not included in the package price or which are not available from Perry Homes. Land price is correct at time of printing and subject to change without notice. Perry Homes reserve the right to withdraw this package at any time without notice. Perry Homes (Aust) Pty Ltd. QBCC Act Lic. No.718748 NSW Lic No. 110970C."